

# COATINGS

## 2023 REFERENCE GUIDE

Products formulated using only  
the highest-quality ingredients



## Interior

### DELUXE

COMING SOON  
NEW SHEENS



#### EXQUISITE®

- :: Exceptional washability and stain resistance
- :: Scuff and burnish resistant
- :: ChromaStay® Technology

EXQUISITE is a deluxe, interior, acrylic paint that is truly, washable while being stain, scuff, burnish and color rub-off resistant.

SHEEN	MATERIAL #	MAX VOC CONTENT	MAX RAVOC
Matte	EXQT10	Ultra-Low VOC (50 g/L)	15 g/L

### ULTRA-PREMIUM



#### EVEREST®

- :: Self-priming
- :: Low odor
- :: Exceptional hide and durability

EVEREST is a line of ultra-premium, Zero VOC, interior, 100% acrylic paints.

SHEEN	MATERIAL #	MAX VOC CONTENT	MAX RAVOC
Flat	EVER10	Zero VOC (2 g/L by ASTM Test Method D 6886)*	1 g/L
Velvet	EVER20		
Eggshell	EVER30		
Low Sheen	EVER40		
Semi-Gloss	EVER50		



#### SUPREMA®

- :: Exceptional hide and durability
- :: Superior stain resistance and washability
- :: Great flow & leveling

SUPREMA is a line of ultra-premium, interior, acrylic latex paints.

SHEEN	MATERIAL #	MAX VOC CONTENT	MAX RAVOC
Flat	SPMA10	Ultra-Low VOC (50 g/L)	25 g/L
Velvet	SPMA20		
Eggshell	SPMA30		
Low Sheen	SPMA40		
Semi-Gloss	SPMA50		

## Exterior

### ULTRA-PREMIUM



#### EVERSHIELD®

- :: Exceptional dirt pick-up resistance
- :: Outstanding gloss retention
- :: Superior non-blocking properties

EVERSHIELD is a line of ultra-premium, exterior, 100% acrylic paints.

SHEEN	MATERIAL #	MAX VOC CONTENT	MAX RAVOC
Flat	EVSH10	Ultra-Low VOC (50 g/L)	25 g/L
Velvet	EVSH20		20 g/L
Eggshell	EVSH30		25 g/L
Low Sheen	EVSH40		30 g/L
Semi-Gloss	EVSH50		30 g/L
Gloss	EVSH60		20 g/L

### PREMIUM



#### SPARTASHIELD®

- :: Excellent hide and durability
- :: Dries to a smooth, uniform finish
- :: Applies easily

SPARTASHIELD is a line of premium, exterior, 100% acrylic paints.

SHEEN	MATERIAL #	MAX VOC CONTENT	MAX RAVOC
Flat	SSHL10	Ultra-Low VOC (50 g/L)	25 g/L
Velvet	SSHL20	Ultra-Low VOC (45 g/L)	
Eggshell	SSHL30	Ultra-Low VOC (50 g/L)	
Low Sheen	SSHL40	Ultra-Low VOC (50 g/L)	
Semi-Gloss	SSHL50	Ultra-Low VOC (45 g/L)	
Gloss	SSHL60	Ultra-Low VOC (50 g/L)	25 g/L

### PROFESSIONAL



#### ACRI-HUES®

- :: Very good hide and durability
- :: Dries to a smooth, uniform finish
- :: Applies easily

ACRI-HUES is a line of professional, exterior, acrylic paints.

SHEEN	MATERIAL #	MAX VOC CONTENT	MAX RAVOC
Flat	ACHS10	Ultra-Low VOC (40 g/L)	20 g/L
Eggshell	ACHS30	Ultra-Low VOC (50 g/L)	
Semi-Gloss	ACHS50	Ultra-Low VOC (50 g/L)	

### PREMIUM



#### SPARTAWALL®

- :: Excellent hide and coverage
- :: Great flow & leveling
- :: Dries to a smooth, uniform finish

SPARTAWALL is a line of premium, interior, acrylic paints. Flat is ultra-low VOC; other sheens are Zero VOC.

SHEEN	MATERIAL #	MAX VOC CONTENT	MAX RAVOC
Flat	SWLL10	Ultra-Low VOC (15 g/L)	10 g/L
Velvet	SWLL20	Zero VOC (2 g/L by ASTM Test Method D 6886)*	1 g/L
Eggshell	SWLL30		
Low Sheen	SWLL40		
Semi-Gloss	SWLL50		



#### SPARTAZERO®

- :: Zero VOC, very low odor
- :: Excellent hide and coverage
- :: Dries to a smooth, uniform finish

SPARTAZERO is a premium, Zero VOC, low odor, interior, flat paint.

SHEEN	MATERIAL #	MAX VOC CONTENT	MAX RAVOC
Flat	SZRO10	Zero VOC (2 g/L by ASTM Test Method D 6886)*	1 g/L

### PROFESSIONAL

COMING SOON  
NEW BASES



#### ACRI-WALL®

- :: Very good touch-up and block resistance
- :: Self-priming on new drywall

ACRI-WALL is a line of professional, Zero VOC, low odor, interior, latex paints.

SHEEN	MATERIAL #	MAX VOC CONTENT	MAX RAVOC
Flat RTU	ACWL10	Zero VOC (2 g/L by ASTM Test Method D 6886)*	1 g/L
Eggshell	ACWL30	Zero VOC (2 g/L by ASTM Test Method D 6886)*	2 g/L
Semi-Gloss	ACWL50		3 g/L

### PROFESSIONAL



#### ACRI-BUILD®

- :: Good hide and durability
- :: Dries to a smooth, uniform finish
- :: Applies easily

ACRI-BUILD is a professional, exterior, 100% acrylic flat paint.

SHEEN	MATERIAL #	MAX VOC CONTENT	MAX RAVOC
Flat	ACBL10	Ultra-Low VOC (50 g/L)	15 g/L



#### PRO-COM™ 6500

- :: Good wet and dry hide
- :: Good touch-up
- :: Applies easily

PRO-COM 6500 is a professional, exterior, 100% acrylic flat paint for commercial and multifamily properties.

SHEEN	MATERIAL #	MAX VOC CONTENT	MAX RAVOC
Flat	PC6510	Ultra-Low VOC (40 g/L)	10 g/L

### PROFESSIONAL



#### SUPER-WALL®

- :: Good hide
- :: Good touch-up
- :: Self-priming on new drywall

SUPER-WALL is a professional, interior, latex flat paint.

SHEEN	MATERIAL #	MAX VOC CONTENT	MAX RAVOC
Flat	SWLR10	Ultra-Low VOC (50 g/L)	20 g/L



#### ULTRA-SCRUB®

- :: Very good washability and touch-up
- :: Good hide

ULTRA-SCRUB is a professional, scrubbable and washable, interior, latex flat paint.

SHEEN	MATERIAL #	MAX VOC CONTENT	MAX RAVOC
Flat	ULSB10	Ultra-Low VOC (50 g/L)	15 g/L



#### CONTRACTOR'S EDGE®

- :: Superior hiding and scrub resistance
- :: Easy to apply and good hide

CONTRACTOR'S EDGE is a line of professional, interior, acrylic paints.

SHEEN	MATERIAL #	MAX VOC CONTENT	MAX RAVOC
Flat	PMCE10	Ultra-Low VOC (50 g/L)	25 g/L
Eggshell	PMCE30		
Semi-Gloss	PMCE50		

## Interior/Exterior

### ULTRA-PREMIUM



#### ARISTOSHIELD®

- :: Excellent flow & leveling
- :: Superior balance of hardness and flexibility
- :: Direct-to-metal coating on properly prepared surfaces

ARISTOSHIELD is a line of ultra-premium, interior/exterior paints formulated with advanced water-based urethane alkyd technology for an oil-like finish.

SHEEN	MATERIAL #	MAX VOC CONTENT	MAX RAVOC
Eggshell	ASHL30	Ultra-Low VOC (50 g/L)	50 g/L
Low Sheen	ASHL40		
Semi-Gloss	ASHL50		
High Gloss	ASHL70		

### PROFESSIONAL



#### VERSA Series

- :: Excellent touch-up
- :: Good hide and durability

VERSA Series is a line of professional, interior/exterior, latex paints.

SHEEN	MATERIAL #	MAX VOC CONTENT	MAX RAVOC
Flat	W6240V	Ultra-Low VOC (50 g/L)	15 g/L
Velvet	W6230E		
Low Sheen	W6250E		
Semi-Gloss	W6160E		
Gloss	W6220E		



Walls: Cool December (DEW383)

\* NOTE: "Zero VOC" means "No organic solvents added." (Trace amounts of VOC may be present as residual components of other ingredients. Dunn-Edwards uses Zero VOC colorants; other additives may increase VOC emissions.)

# Primers

## Interior



NEW DRYWALL



### VINYLASTIC® Premium

- :: Excellent sealing qualities
- :: Excellent hide
- :: Excellent enamel holdout

VINYLASTIC Premium is an interior, acrylic wall sealer for new drywall.

MATERIAL #	MAX VOC CONTENT	MAX RAVOC
VNPRO0	Ultra-Low VOC (5 g/L by ASTM Test Method D 6886)*	5 g/L



### VINYLASTIC® Select

- :: Very good sealing qualities

VINYLASTIC Select is a Zero VOC, interior, latex wall sealer for new drywall.

MATERIAL #	MAX VOC CONTENT	MAX RAVOC
VNSL00	Zero VOC (4 g/L by ASTM Test Method D 6886)*	4 g/L



### VINYLASTIC® Plus

- :: Good hide and coverage
- :: Easy to apply

VINYLASTIC Plus is an interior, latex wall sealer designed for use on a Level 5 drywall finish.

MATERIAL #	MAX VOC CONTENT	MAX RAVOC
VNPL00	Low VOC (95 g/L)	50 g/L

## Exterior



WOOD SIDING



### EZ-PRIME® Premium

- :: Excellent tannin stain resistance
- :: Excellent hide and coverage
- :: Excellent enamel holdout

EZ-PRIME Premium is an exterior wood primer, ideally suited for redwood and cedar.

MATERIAL #	MAX VOC CONTENT	MAX RAVOC
EZPRO0	Ultra-Low VOC (50 g/L)	20 g/L



### EZ-PRIME® Select

- :: Very good tannin stain resistance
- :: Very good hide, coverage and enamel holdout

EZ-PRIME Select is an exterior wood primer, ideally suited for redwood and cedar.

MATERIAL #	MAX VOC CONTENT	MAX RAVOC
EZSL00	Ultra-Low VOC (50 g/L)	25 g/L

## Interior/Exterior



METAL



### BLOC-RUST® Premium

- :: Excellent corrosion resistance and adhesion
- :: Very good hide

BLOC-RUST Premium is an interior/exterior, rust preventative primer for ferrous metals.

MATERIAL #	MAX VOC CONTENT	MAX RAVOC
BRPRO0-2-WH	Ultra-Low VOC (50 g/L)	40 g/L
BRPRO0-2-RO		

Available in Red Oxide (for heavy rust and dark-colored topcoats) and White (for light rust and light-colored topcoats).



MASONRY



### EFF-STOP® Premium

- :: Excellent efflorescence and alkali resistance
- :: Superior adhesion

EFF-STOP Premium is an interior/exterior, epoxy-fortified acrylic primer/sealer for masonry.

MATERIAL #	MAX VOC CONTENT	MAX RAVOC
ESPRO0	Ultra-Low VOC (50 g/L)	5 g/L



### EFF-STOP® Select

- :: Very good alkali and efflorescence resistance

EFF-STOP Select is an interior/exterior, 100% acrylic primer/sealer for masonry.

MATERIAL #	MAX VOC CONTENT	MAX RAVOC
ESSL00	Ultra-Low VOC (50 g/L)	30 g/L

## Interior/Exterior | Continued



MASONRY/  
CRACK-RESISTANT



### FLEX-PRIME® Select

- :: Bridges hairline cracks in masonry surfaces
- :: Very good alkali and efflorescence resistance

FLEX-PRIME Select is an interior/exterior, crack-resistant, latex primer for masonry.

MATERIAL #	MAX VOC CONTENT	MAX RAVOC
FPSL00	Ultra-Low VOC (50 g/L)	25 g/L



CONCRETE BLOCK



### Smooth BLOCFIL™ Premium

- :: Very good alkali resistance
- :: Fills and bridges voids and cracks
- :: Prevents water penetration

Smooth BLOCFIL Premium is an interior/exterior, 100% acrylic latex, heavy-bodied filler for porous concrete block.

MATERIAL #	MAX VOC CONTENT	MAX RAVOC
SBPRO0	Low VOC (65 g/L)	40 g/L



### Smooth BLOCFIL™ Select

- :: Fills and bridges voids and cracks
- :: Prevents water penetration
- :: Improves appearance

Smooth BLOCFIL Select is an interior/exterior, latex, heavy-bodied filler for porous concrete block.

MATERIAL #	MAX VOC CONTENT	MAX RAVOC
SBSL00	Ultra-Low VOC (50 g/L)	35 g/L



MULTI-SURFACE



### ULTRA-GRIP® Premium

- :: Outstanding stain blocking
- :: Tannin stain resistant
- :: Excellent adhesion

ULTRA-GRIP Premium is an interior/exterior, acrylic, multi-surface primer.

MATERIAL #	MAX VOC CONTENT	MAX RAVOC
UGPRO0	Ultra-Low VOC (50 g/L)	20 g/L



### ULTRA-GRIP® Select

- :: Excellent adhesion
- :: Great hide and enamel holdout

ULTRA-GRIP Select is a Zero VOC, interior/exterior, acrylic, multi-surface primer.

MATERIAL #	MAX VOC CONTENT	MAX RAVOC
UGSL00	Zero VOC (3 g/L by ASTM Test Method D 6886)*	1 g/L



MASONRY



### PRO-COM™ 6500

- :: Good alkali and efflorescence resistance
- :: Can be applied to masonry surfaces with a pH up to 13

PRO-COM 6500 Masonry Primer is an interior/exterior, acrylic primer for masonry. Ideal for commercial and multifamily properties.

MATERIAL #	MAX VOC CONTENT	MAX RAVOC
PCMA00	Ultra-Low VOC (50 g/L)	25 g/L



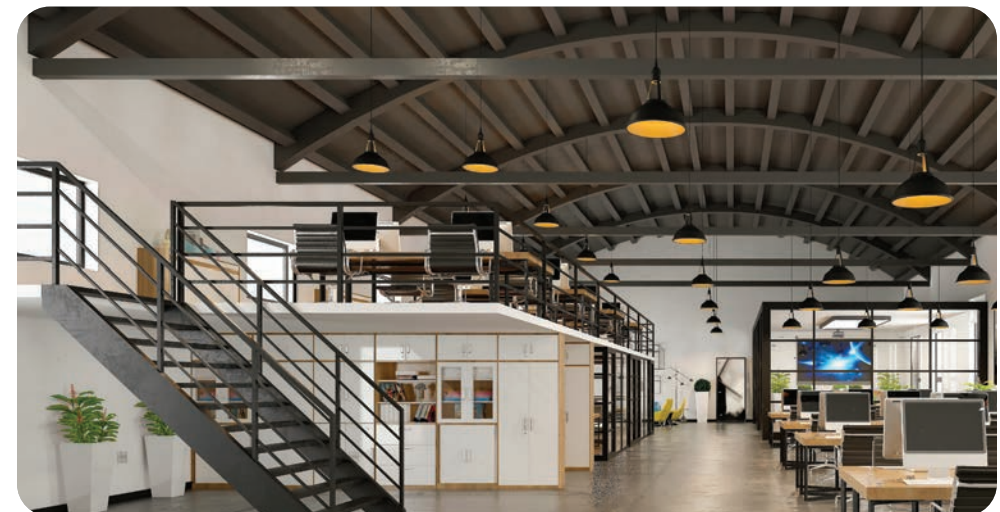
### CONTRACTOR'S EDGE®

- :: Multi-purpose
- :: Excellent adhesion
- :: Low odor

CONTRACTOR'S EDGE is an interior/exterior, multi-purpose primer.

MATERIAL #	MAX VOC CONTENT
CE-352957-2	Low VOC (<100 g/L)**

\*\* as supplied



Walls: Light Beige (DE6211) • Ceiling + Metal Work: Espresso Macchiato (DET680)

\* NOTE: "Zero VOC" means "No organic solvents added." (Trace amounts of VOC may be present as residual components of other ingredients. Dunn-Edwards uses Zero VOC colorants; other additives may increase VOC emissions.)

# Specialty Coatings

## Paints & Stain



### AQUAFALL® Dry Fall Coating

- :: Excellent adhesion to galvanized heating ducts, foil-wrapped ducts, steel girders, masonry and wood
- :: Great coverage and easy application

AQUAFALL is a line of premium fast-drying, waterborne dry fall (dry fog) coatings designed for interior ceilings and overhead surfaces.

SHEEN	MATERIAL #	MAX VOC CONTENT	MAX RAVOC
Flat	AQUA10	Ultra-Low VOC (35 g/L)	10 g/L
Eggshell	AQUA30	Ultra-Low VOC (50 g/L)	20 g/L
Semi-Gloss	AQUA50		

new



### CEILING PAINT Dead Flat

- :: Exceptional hide
- :: Spatter-resistant formulation
- :: Excellent sheen uniformity
- :: Outstanding touch-up performance

CEILING PAINT is a premium, Zero VOC, low odor, interior paint ideal for use on residential, commercial and institutional projects where a dead flat ceiling paint is required.

SHEEN	MATERIAL #	MAX VOC CONTENT	MAX RAVOC
Dead Flat	CEIL10	Zero VOC (4 g/L by ASTM Test Method D 6886)*	3 g/L

new

COMING SOON  
NEW SHEENS



### DECOGLO® Cabinet & Trim Paint

- :: Exceptional film hardness
- :: Scuff and chemical resistant
- :: Fast dry and block resistant
- :: Excellent flow & leveling

DECOGLO is an ultra-premium, interior, urethane-modified acrylic, semi-gloss, cabinet, door and trim paint.

SHEEN	MATERIAL #	MAX VOC CONTENT	MAX RAVOC
Semi-Gloss	DGL050	Ultra-Low VOC (50 g/L)	40 g/L



### ENDURALASTIC® 5 Elastomeric Wall Coating

- :: Excellent elasticity and elongation
- :: Very good crack-bridging properties
- :: Waterproofs against wind-driven rain

ENDURALASTIC 5 is a premium, 100% acrylic elastomeric wall coating.

SHEEN	MATERIAL #	MAX VOC CONTENT	MAX RAVOC
Flat	EDLV10	Ultra-Low VOC (50 g/L)	25 g/L



### ENDURALASTIC® 10 Elastomeric Wall Coating

- :: Superior elasticity and elongation
- :: Excellent crack-bridging properties
- :: Waterproofs against wind-driven rain

ENDURALASTIC 10 is a premium, 100% acrylic elastomeric wall coating.

SHEEN	MATERIAL #	MAX VOC CONTENT	MAX RAVOC
Flat	EDLX10	Ultra-Low VOC (50 g/L)	25 g/L



### VIN-L-STRIPE® Zone Marking Paint

- :: Dries very fast and has excellent adhesion
- :: Exceptional resistance to weather, rubber-tired vehicles and foot traffic

VIN-L-STRIPE is a line of premium, fast-drying, exterior, waterborne acrylic traffic paints designed for use on asphalt and concrete roads, curbs, parking lots, driveways, airfields and helicopter landing pads.

SHEEN	MATERIAL #	MAX VOC CONTENT	MAX RAVOC
Flat	VSZM10	Low VOC (75 g/L)**	15 g/L
Velvet	VSZM20	Low VOC (100 g/L)**	20 g/L

\*\*as supplied

new



### SOLID-COLOR® Deck, Fence & Siding Stain

- :: Very good protection from UV and water damage
- :: Resists cracking and peeling
- :: Tintable in 50 transformative colors

SOLID-COLOR is a water-based, 100% acrylic matte stain designed to resist UV and water damage.

SHEEN	MATERIAL #	MAX VOC CONTENT	MAX RAVOC
Matte	STSE10	Ultra-Low VOC (50 g/L)	35 g/L



Deck: Fireside Chat (DESS05)

## Primers



STAIN-BLOCKING



WOOD



DRYWALL

new



### BLOCK-IT®

- :: Blocks tough stains
- :: Excellent adhesion
- :: Good sandability

BLOCK-IT is a high-hiding, stain-blocking, interior/exterior primer.

MATERIAL #	MAX VOC CONTENT	MAX RAVOC
BIPR00	Ultra-Low VOC (50 g/L)	45 g/L



### DECOPRIME®

- :: Fast drying
- :: Exceptional sandability, adhesion and enamel holdout

DECOPRIME is a water-based wood primer for interior wood, hardboard and wallboard.

MATERIAL #	MAX VOC CONTENT	MAX RAVOC
DCPR00	Ultra-Low VOC (50 g/L)	15 g/L



### PREP-WALL™

- :: Provides a smooth and sandable surface
- :: Minimizes texture variations from drywall face paper

PREP-WALL is a professional interior surface conditioner/primer that improves the quality of the drywall finish.

MATERIAL #	MAX VOC CONTENT	MAX RAVOC
PRWL00	Ultra-Low VOC (25 g/L)	10 g/L



MASONRY/  
BONDING  
PRIMER



CHALK-BINDING



### SUPER-LOC®

- :: Excellent adhesion
- :: Excellent alkali and efflorescence resistance
- :: Easy to apply

SUPER-LOC is a high-performance, interior/exterior masonry/bonding primer for difficult-to-paint surfaces.

MATERIAL #	MAX VOC CONTENT	MAX RAVOC
SLPR00	Ultra-Low VOC (50 g/L)	25 g/L



### SURFACO®

- :: Excellent adhesion to chalky surfaces
- :: Good alkali and efflorescence resistance
- :: Low odor

SURFACO is a chalk-binding, interior/exterior primer that provides excellent adhesion on previously painted chalky surfaces.

MATERIAL #	MAX VOC CONTENT	MAX RAVOC
SFSL00	Ultra-Low VOC (10 g/L)**	3 g/L

\*\*as supplied



Body: Warm White (DEW380) • Metal Work: Oasis (DET546)

\*NOTE: "Zero VOC" means "No organic solvents added." (Trace amounts of VOC may be present as residual components of other ingredients. Dunn-Edwards uses Zero VOC colorants; other additives may increase VOC emissions.)

## Paints



### ENDURA-COAT® DTM Acrylic Coatings

- :: Outstanding corrosion resistance
- :: Excellent adhesion
- :: Direct-to-metal application

ENDURA-COAT® is a line of interior/exterior, high-performance, single-component, water-based, acrylic industrial maintenance coatings.



### ENDURACAT® Pre-Catalyzed Water-Based Epoxy

- :: Superior adhesion
- :: Excellent chemical resistance and washability

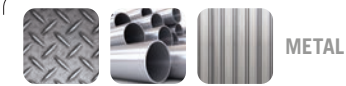
ENDURACAT is an interior, high-performance, single-component, water-based, pre-catalyzed, industrial maintenance epoxy.

SHEEN	MATERIAL #	MAX VOC CONTENT	MAX RAVOC
Eggshell	ENCT30	Low VOC (100 g/L)	55 g/L
Semi-Gloss	ENCT50		
Gloss	ENCT60		

SHEEN	MATERIAL #	MAX VOC CONTENT	MAX RAVOC
Semi-Gloss	ENPX50	Ultra-Low VOC (50 g/L)	20 g/L

*1 For Professional Use Only. Not for residential use in California.*

## Primers



METAL



GALVANIZED METAL



### ENDURAPRIME® Ferrous Metal

- :: Corrosion resistant
- :: Superior adhesion
- :: Fast drying

ENDURAPRIME is a high-performance, single-component, water-based, acrylic metal primer.



### ULTRASHIELD® Galvanized Metal

- :: Excellent adhesion and application properties
- :: Good corrosion resistance

ULTRASHIELD Galvanized Metal is a high-performance, very low odor, single-component, water-based, acrylic galvanized-metal primer.

MATERIAL #	MAX VOC CONTENT	MAX RAVOC
ENPRO0	Ultra-Low VOC (50 g/L)	30 g/L

MATERIAL #	MAX VOC CONTENT	MAX RAVOC
ULGM00	Ultra-Low VOC (50 g/L)	20 g/L



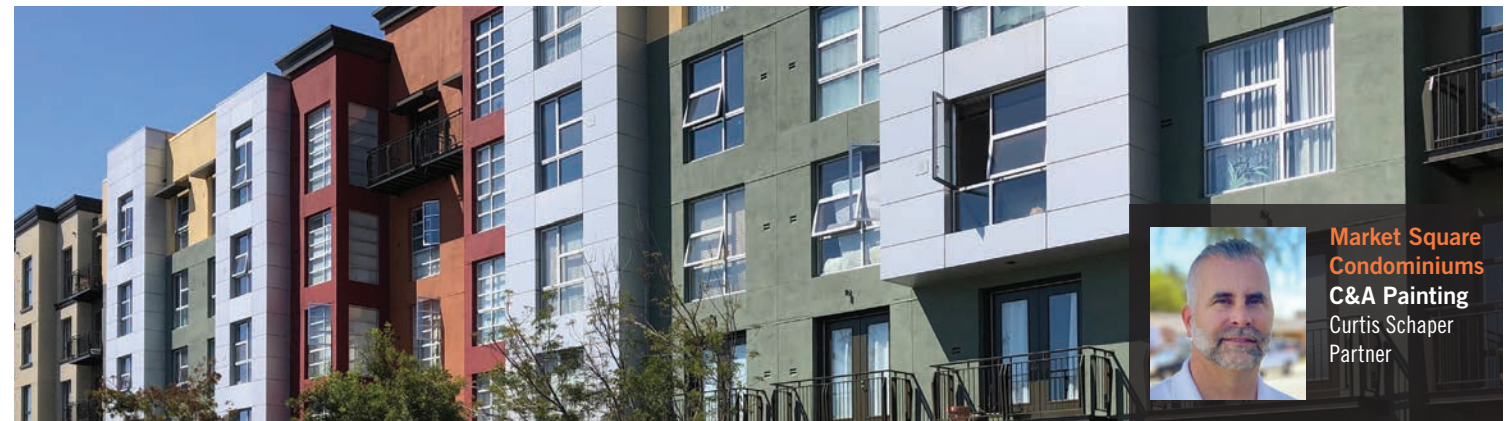
Metal + Trim: Silver Spoon (DE6366) • Walls + Pillars: Igloo (DEW379)



**UPS Distribution Center Addition**  
Ganado Painting & Wallcovering  
Cesar Palacios & Danny Thomas  
Co-owners

**“We have a liaison we work hand-in-hand with at the Dunn-Edwards® store in its manufacturing facility. It’s more like a concierge service we have with them.” – Danny Thomas**

This project had numerous add-ons and extensions involving painting 350,000 sq. ft. of added space to an existing 600,000-sq.-ft. site to expand capabilities and capacity. A roughly 3-mile-long concrete wall was also built around the building. In total, the concrete tilt-up project involved more than 6,500 gallons of paint. The teams used Dunn-Edwards ACRI-HUES® flat paint for all exterior concrete and masonry wall surfaces, ARISTOSHIELD® paint in semi-gloss for all metal, and SPARTAWALL® paint in eggshell on all interior drywall work. With large jobs that have shifting needs and numerous add-ons, the ability to deliver the right product on time is key to the project going smoothly. Having a supplier that’s on their game helps.



**Market Square Condominiums**  
C&A Painting  
Curtis Schaper  
Partner

**“Sometimes, even if Dunn-Edwards is not spec’d on the project, for certain situations like metal surfaces, we’ll ask to use their product instead. The quality is just that good.”**

The repaint of Market Square, a 5-story building taking up an entire city block, involved all of the building’s stucco, metal railings and trim. The 8-man crew worked in tight spaces and operated a boom lift in heavy pedestrian and vehicular traffic, so the job required considerable preparation and planning. Paint deliveries demanded clear communication and on-time delivery—with no hiccups. Among the job’s challenges was Schaper’s Representative being tasked with matching 13 colors from a diverse palette to Dunn-Edwards colors, which they executed perfectly. They used flat and semi-gloss SPARTASHIELD® exterior paint, and the customer commented on how good the project looked. “It’s the highest-quality paint out there and it just makes us all look good,” Schaper says.

## An Environmentally Conscious Paint Company



Products bearing this logo are **EG-FREE™** and **TAC/HAP-free**

Ethylene Glycol (EG), a solvent often used in water-based paints, is listed as a Toxic Air Contaminant (TAC) and Hazardous Air Pollutant (HAP). In 1983, we were the first in the industry to voluntarily replace EG with Propylene Glycol, a nontoxic alternative “generally regarded as safe” by the FDA. Also, every Dunn-Edwards product with the EG-FREE logo is formulated without any other TAC or HAP.



**RAVOC** VOC and RAVOC ratings on every label

Dunn-Edwards was the first paint company to label its products with RAVOC ratings — Reactivity-Adjusted VOC Content — a better way to measure potential air quality impacts of coatings. To learn more about RAVOC ratings visit [dunnedwards.com/RAVOC](http://dunnedwards.com/RAVOC).



**LEED® Gold-certified paint manufacturing facility**

In 2011, Dunn-Edwards opened the world’s first LEED® Gold-certified paint manufacturing facility in Phoenix, AZ. Encompassing manufacturing, product development, quality control and more, the 336,000-sq.-ft. facility was designed to be the greenest in the industry.

“LEED” and related logo is a trademark owned by the U.S. Green Building Council and is used with permission.

# Paint Selection Guide

● Deluxe ● Ultra-Premium ● Premium ● Professional

PRODUCT NAME	VOC CONTENT <sup>§</sup>	QUALITY	MATERIAL #							
			FLAT	MATTE	VELVET	EGGSHELL	LOW SHEEN	SEMI-GLOSS	GLOSS	HIGH GLOSS
INTERIOR										
EXQUISITE	50 g/L	●		EXQT10		COMING SOON NEW SHEEN		COMING SOON NEW SHEEN		
EVEREST	Zero VOC	●	EVER10		EVER20	EVER30		EVER50		
SUPREMA	50 g/L	●	SPMA10		SPMA20	SPMA30	SPMA40	SPMA50		
SPARTAWALL	Flat: 15 g/L Other Sheens: Zero VOC	●	SWLL10		SWLL20	SWLL30	SWLL40	SWLL50		
SPARTAZERO	Zero VOC	●	SZRO10							
ACRI-WALL <small>COMING SOON NEW BASES</small>	Zero VOC	●	ACWL10 (RTU)			ACWL30		ACWL50		
SUPER-WALL	50 g/L	●	SWLR10							
ULTRA-SCRUB	50 g/L	●	ULSB10							
CONTRACTOR'S EDGE	50 g/L	●	PMCE10			PMCE30		PMCE50		
EXTERIOR										
EVERSHIELD	50 g/L	●	EVSH10		EVSH20	EVSH30	EVSH40	EVSH50	EVSH60	
SPARTASHIELD	45-50 g/L	●	SSHL10		SSHL20	SSHL30	SSHL40	SSHL50	SSHL60	
ACRI-HUES	40-50 g/L	●	ACHS10			ACHS30		ACHS50		
ACRI-BUILD	50 g/L	●	ACBL10							
<small>new</small> PRO-COM 6500	40 g/L	●	PC6510							
INTERIOR/EXTERIOR										
ARISTOSHIELD	50 g/L	●				ASHL30	ASHL40	ASHL50		ASHL70
VERSA Series	50 g/L	●	W6240V		W6230E		W6250E	W6160E	W6220E	
SPECIALTY										
AQUAFALL Dry Fall Coating	35-50 g/L		AQUA10			AQUA30		AQUA50		
<small>new</small> CEILING PAINT	Zero VOC		CEIL10							
<small>new</small> DECOGLO Cabinet, Door & Trim Paint	50 g/L					COMING SOON NEW SHEEN		DGLO50		
ENDURALASTIC 5 Elastomeric Wall Coating	50 g/L		EDLV10							
ENDURALASTIC 10 Elastomeric Wall Coating	50 g/L		EDLX10							
VIN-L-STRIPE Zone Marking Paint	75-100 g/L		VSZM10		VSZM20					
<small>new</small> SOLID-COLOR Stain Deck, Fence & Siding Stain	50 g/L			STSE10						
LIGHT-DUTY INDUSTRIAL										
ENDURA-COAT <sup>†</sup> DTM Acrylic Coatings	100 g/L					ENCT30		ENCT50	ENCT60	
ENDURACAT Pre-Catalyzed Water-Based Epoxy	50 g/L							ENPX50		

<sup>§</sup>For specific product VOC content, refer to the Product Data Sheet that can be found at [dunnedwards.com](http://dunnedwards.com).  
<sup>†</sup>For Professional Use Only. Not for residential use in California.

# Primer Selection Guide

PRODUCT NAME	VOC CONTENT <sup>§</sup>	SUBSTRATES	MATERIAL #
INTERIOR			
VINYLASTIC Premium	5 g/L	NEW DRYWALL	VNPRO0
VINYLASTIC Select	Zero VOC	NEW DRYWALL	VNSL00
VINYLASTIC Plus	95 g/L	LEVEL 5 DRYWALL	VNPL00
EXTERIOR			
EZ-PRIME Premium	50 g/L	REDWOOD / CEDAR	EZPRO0
EZ-PRIME Select	50 g/L	REDWOOD / CEDAR	EZSL00
INTERIOR/EXTERIOR			
BLOC-RUST Premium	50 g/L	FERROUS METAL	BRPRO0-2-WH BRPRO0-2-RO
EFF-STOP Premium	50 g/L	MASONRY	ESPRO0
EFF-STOP Select	50 g/L	MASONRY	ESSL00
FLEX-PRIME Select	50 g/L	MASONRY / CRACK-RESISTANT	FPSL00
Smooth BLOCFIL Premium	65 g/L	CONCRETE BLOCK	SBPRO0
Smooth BLOCFIL Select	50 g/L	CONCRETE BLOCK	SBSL00
ULTRA-GRIP Premium	50 g/L	MULTI-SURFACE	UGPRO0
ULTRA-GRIP Select	Zero VOC	MULTI-SURFACE	UGSL00
<small>new</small> PRO-COM 6500	50 g/L	MASONRY	PCMA00
CONTRACTOR'S EDGE	<100 g/L	MULTI-PURPOSE	CE-352957-2
SPECIALTY			
BLOCK-IT Stain-Blocking Primer	50 g/L	STAIN-BLOCKING	BIPRO0
<small>new</small> DECOPRIME Cabinet, Door & Trim Primer	50 g/L	WOOD / HARDBOARD / WALLBOARD	DCPRO0
PREP-WALL Drywall Conditioner	25 g/L	NEW DRYWALL	PRWL00
SUPER-LOC Masonry/Bonding Primer	50 g/L	MASONRY / BONDING	SLPRO0
SURFACO Chalk-Binding Primer	10 g/L	CHALK-BINDING	SFSL00
LIGHT-DUTY INDUSTRIAL			
ENDURAPRIME Ferrous Metal Primer	50 g/L	FERROUS METAL	ENPRO0
ULTRASHIELD Galvanized Metal Primer	50 g/L	GALVANIZED METAL	ULGM00

<sup>§</sup>For specific product VOC content, refer to the Product Data Sheet that can be found at [dunnedwards.com](http://dunnedwards.com).



## A GREEN LEGACY, A GREENER FUTURE.

Dunn-Edwards has a green legacy that makes us proud and inspires us to do more. We are firmly dedicated to the principle of eco-efficiency, which we define as the ability to satisfy human needs in ways that minimize adverse impacts on energy and material resources, environmental quality, and human health and safety.



**PHOTOGRAPHS:** Paint colors depicted in the photographs in this guide appear differently than on actual surfaces. Photographic processes and lighting will alter color.

**COVER PHOTO:** *Body:* White Daisy (DEHW02)

**BACK PHOTO:** *Body:* Almond Milk (DEHW01) • *Accent:* Egyptian Sand (DE6207)



(888) DE PAINT (337-2468) | [dunnedwards.com](https://dunnedwards.com)

©2023 Dunn-Edwards Corporation. All rights reserved. ESL1014 - 12M 05/23

